



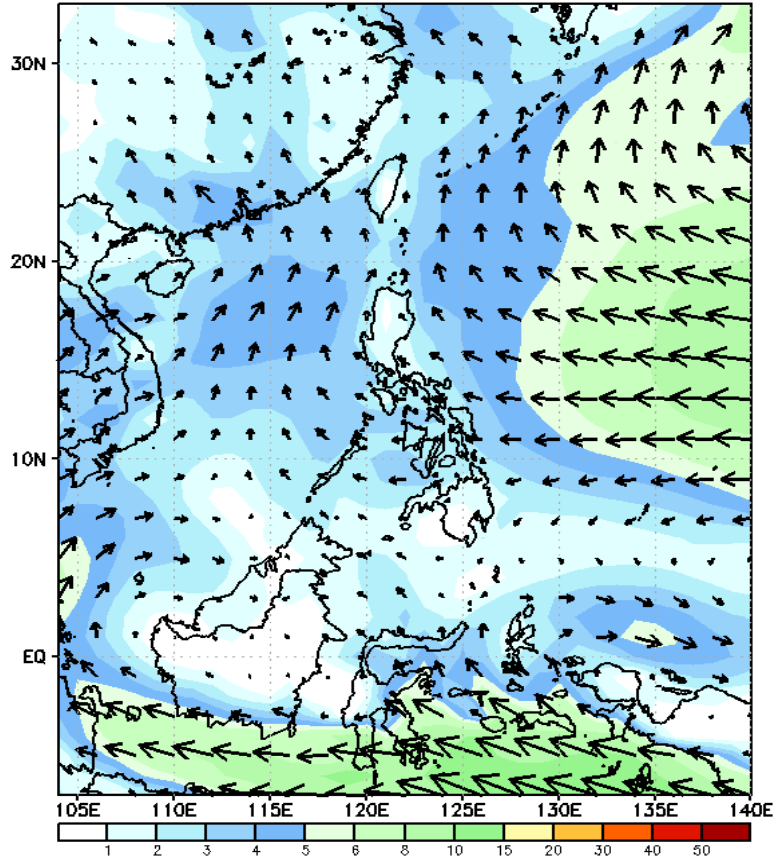
Week 1 & Week 2 Forecast for the Philippines using GEFS Model



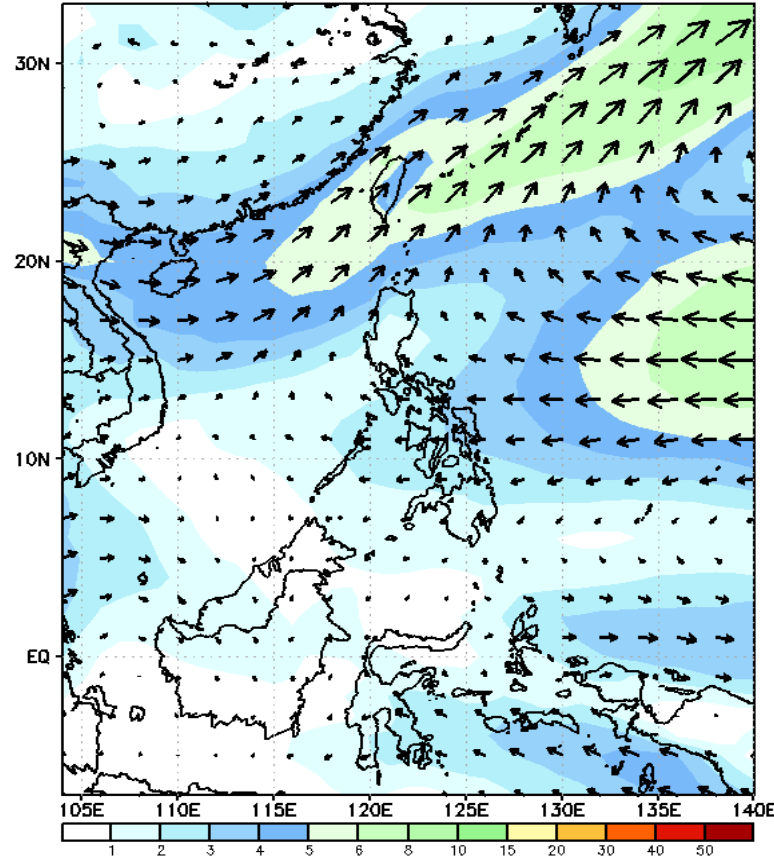
GEFS Week-1 Wind Forecasts:

Week 1: May 17-23, 2024

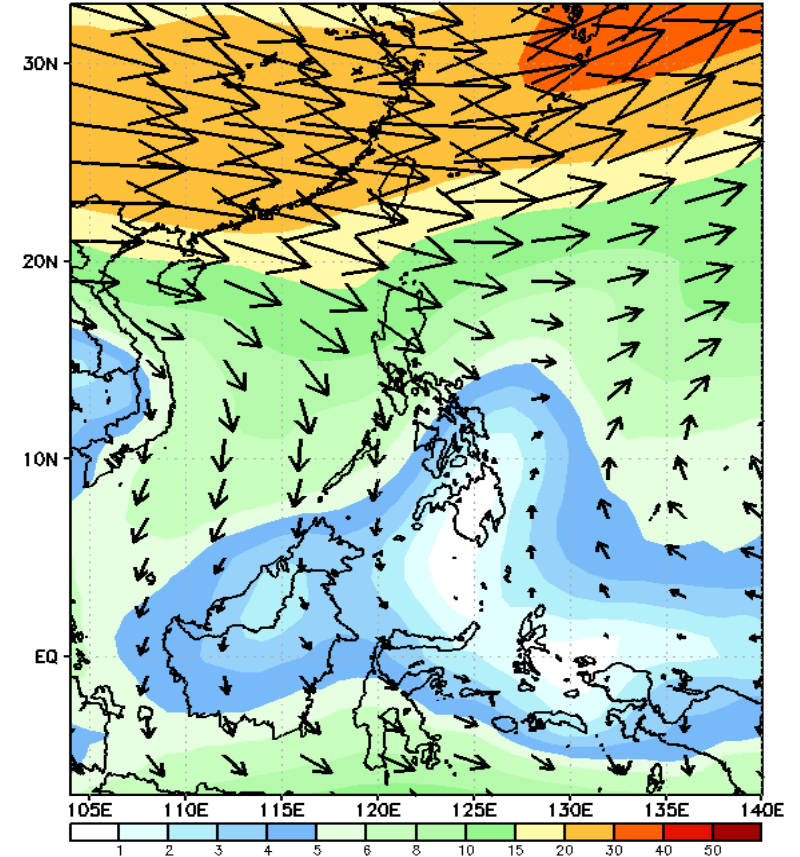
GEFS Week-1 850-hPa Wind Total
Valid: 20240517 - 20240523



GEFS Week-1 700-hPa Wind Total
Valid: 20240517 - 20240523

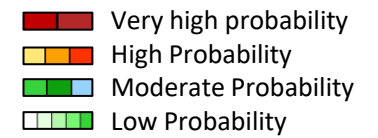


GEFS Week-1 200-hPa Wind Total
Valid: 20240517 - 20240523



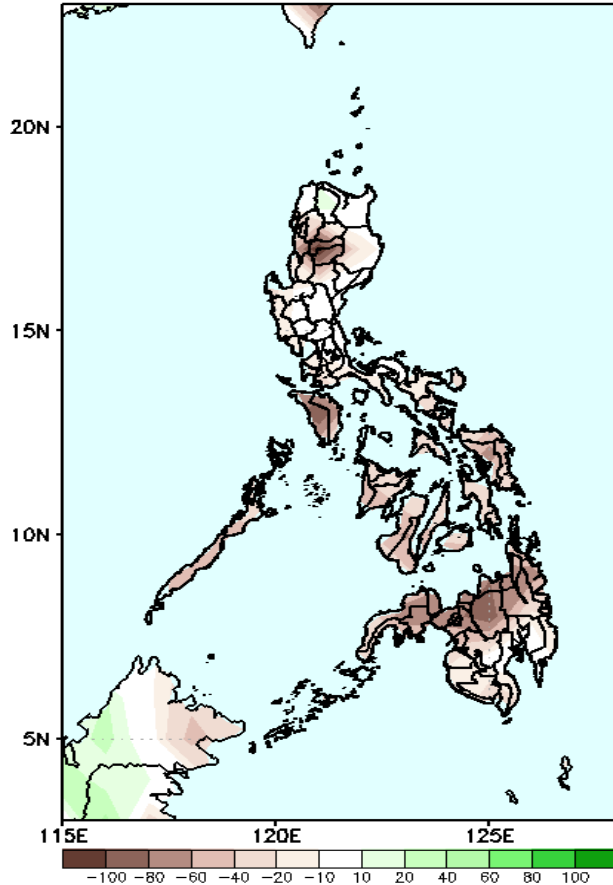
Easterlies continuously affect most parts of the country. Expect dry and warm days during the forecast period.

Precipitation Anomaly and Exceedance Probability > 25/50 mm

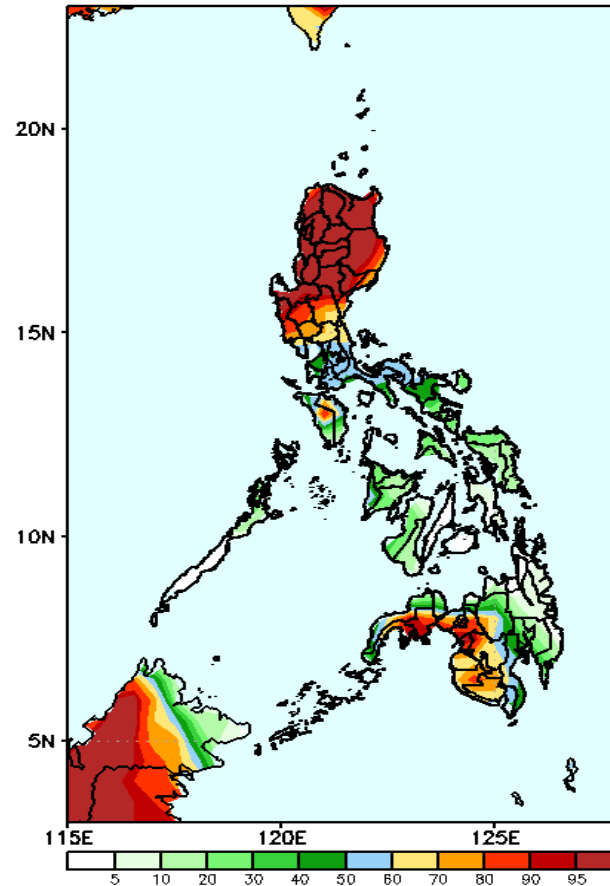


Week 1: May 17-23, 2024

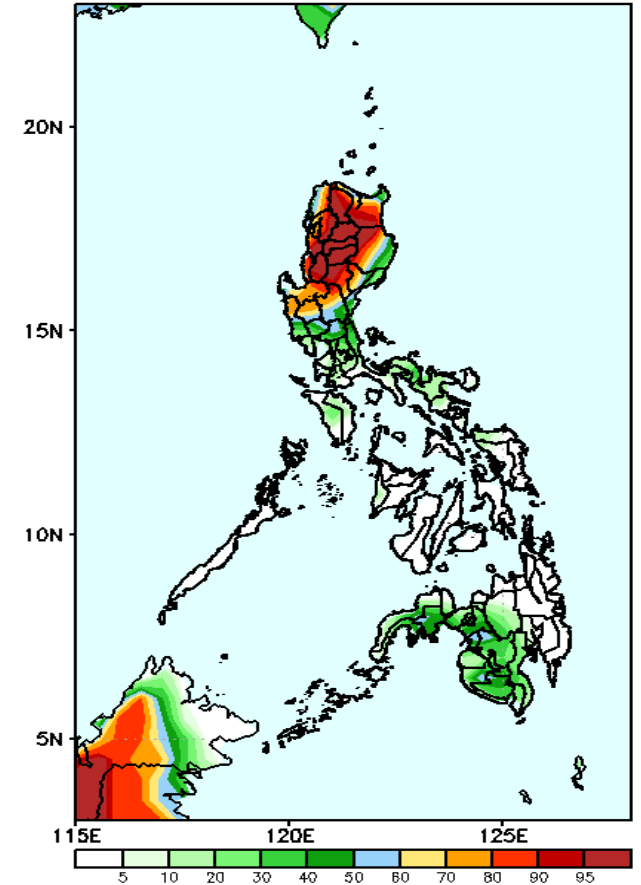
GEFS Week-1 Precip Anomaly
Valid: 20240517 - 20240523



GEFS Week-1 Exceedance Prob. > 25mm
Valid: 20240517 - 20240523



GEFS Week-1 Exceedance Prob. > 50mm
Valid: 20240517 - 20240523



Rainfall deficit of up to 100mm is expected in most parts of CAR, Mindoro, Samar provinces and northern Mindanao; 10-80mm for the rest of the country.

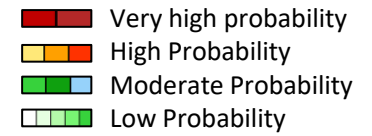
Probability to Exceed 25mm

- High to very high over northern and central Luzon;
- Moderate to high over the rest Luzon and western Mindanao;
- Low to moderate over the rest of the country.

Probability to Exceed 50mm

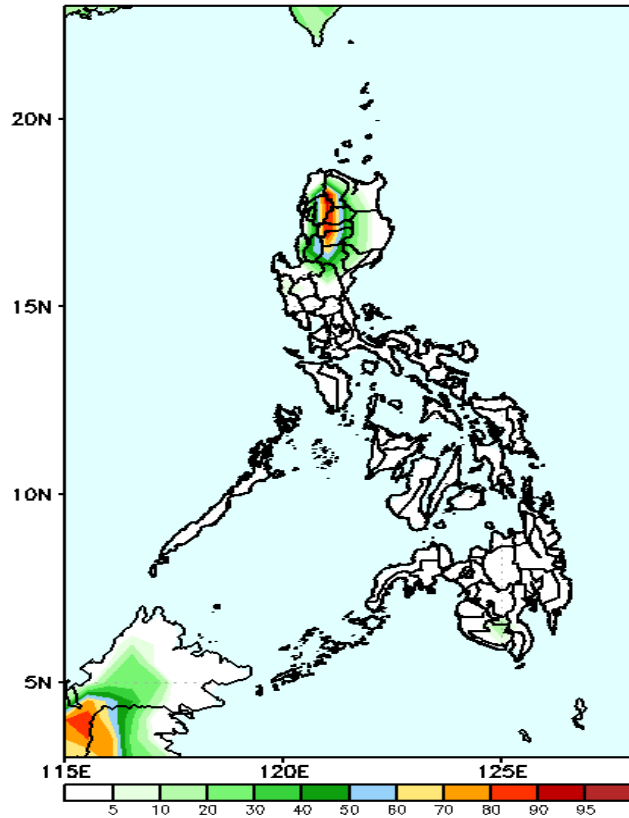
- High to very high over CAR, La Union, Nueva Vizcaya;
- Moderate to high over the rest of northern Luzon and central Luzon;
- Low to moderate over the rest of Luzon and western Mindanao;
- Low over the rest of the country.

Exceedance Probability > 100/150/200 mm



Week 1: May 17-23, 2024

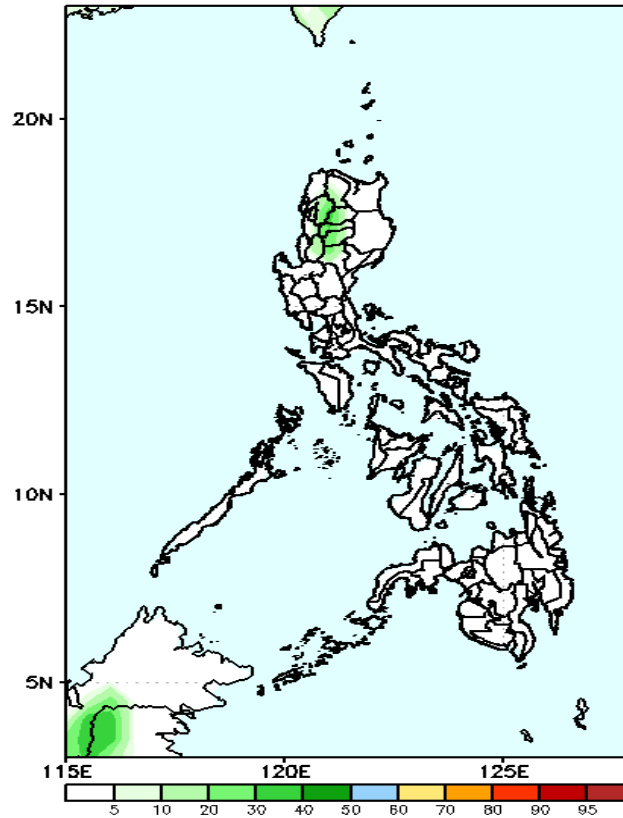
GEFS Week-1 Exceedance Prob. > 100mm
Valid: 20240517 - 20240523



Probability to Exceed 100mm

- Low to moderate over some areas in CAR;
- Low over the rest of the country.

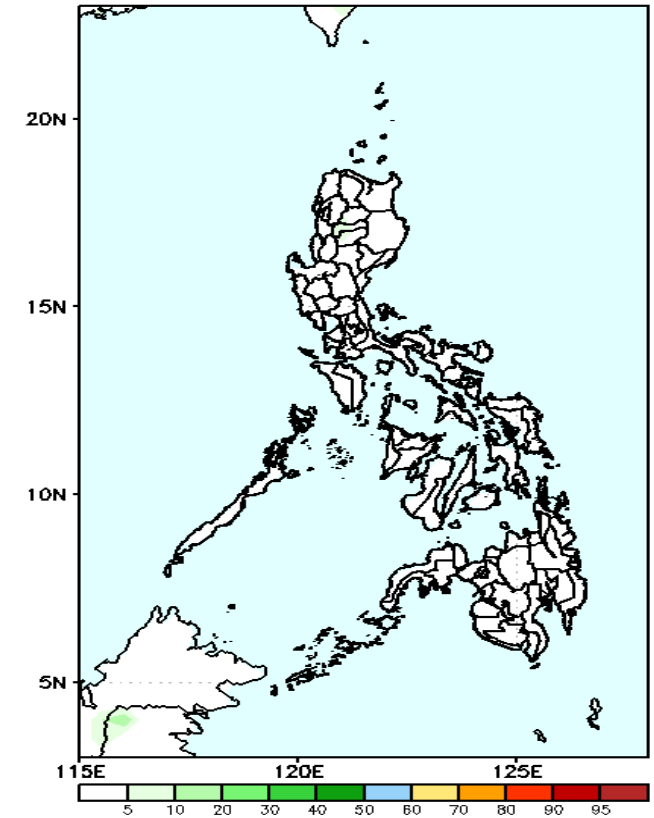
GEFS Week-1 Exceedance Prob. > 150mm
Valid: 20240517 - 20240523



Probability to Exceed 150mm

- Moderate to high over Ifugao and Nueva Vizcaya;
- Low over the rest of the country.

GEFS Week-1 Exceedance Prob. > 200mm
Valid: 20240517 - 20240523



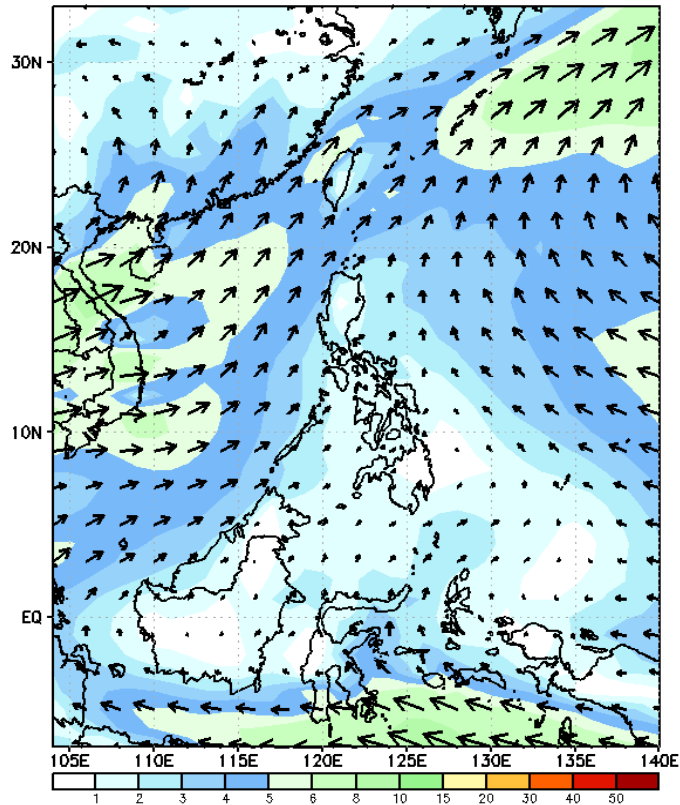
Probability to Exceed 200mm

- Low across the country.

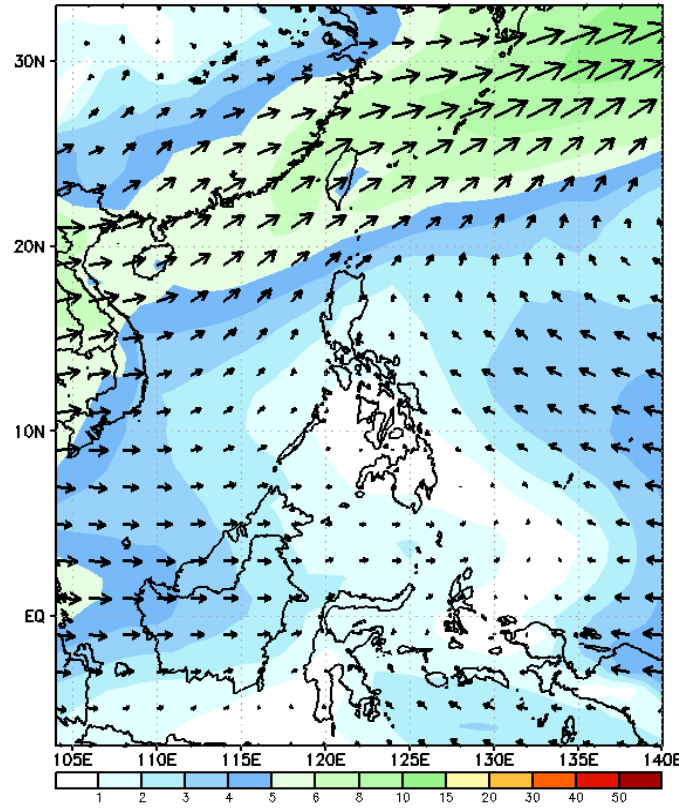
GEFS Week-2 Wind Forecasts:

Week 2: May 24-30, 2024

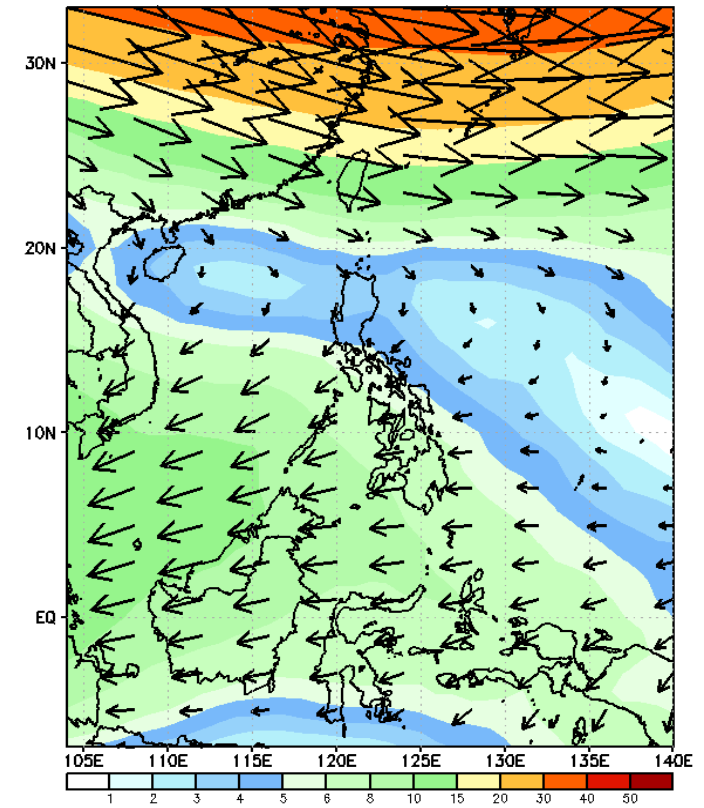
GEFS Week-2 850-hPa Wind Total
Valid: 20240524 - 20240530



GEFS Week-2 700-hPa Wind Total
Valid: 20240524 - 20240530

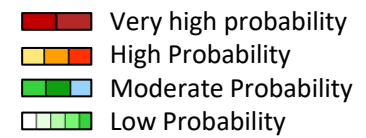


GEFS Week-2 200-hPa Wind Total
Valid: 20240524 - 20240530

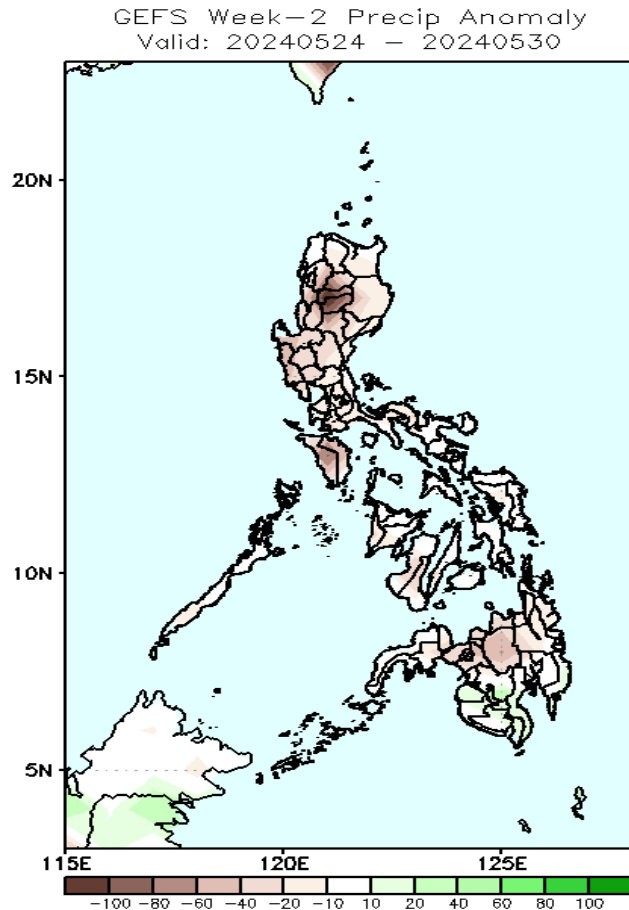


Southwest windflow will likely affect some areas in western Luzon. Easterlies will likely prevail in most parts of the country. Expect dry and warm days during the forecast period.

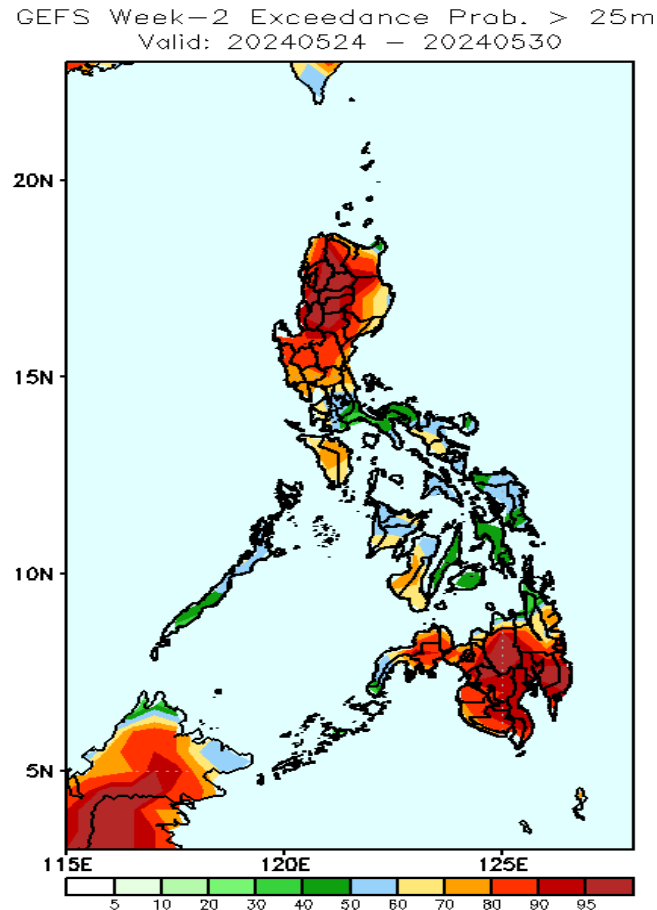
Precipitation Anomaly and Exceedance Probability > 25/50 mm



Week 2: May 24-30, 2024

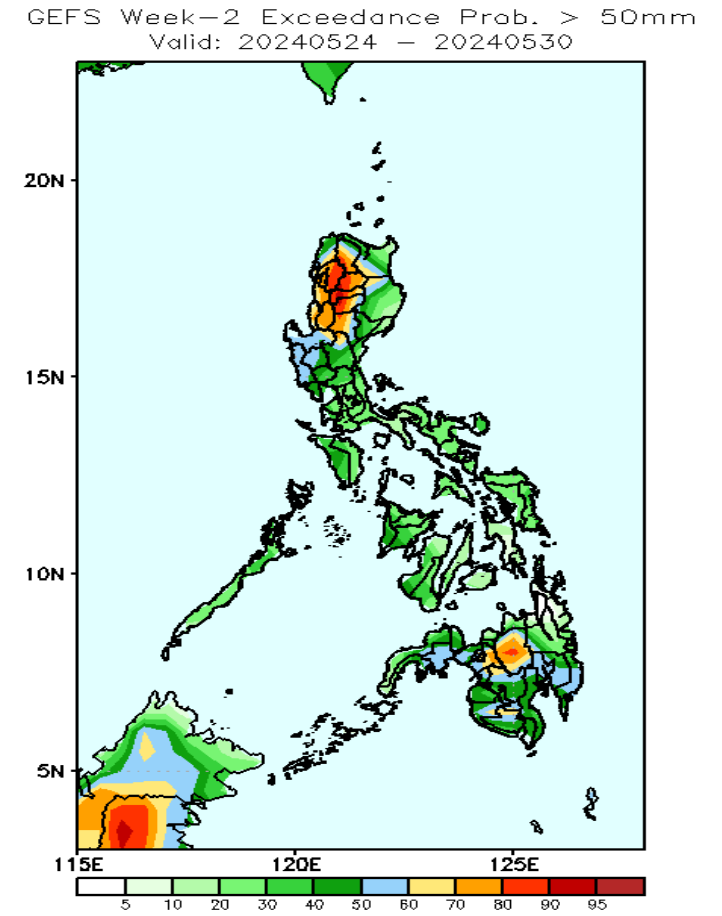


Rainfall deficit of 20-80mm is expected in most parts of the country.



Probability to Exceed 25mm

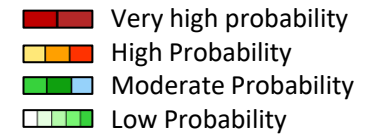
- High to very high over most parts of northern and central Luzon and Mindanao;
- Moderate to high over the rest of the country.



Probability to Exceed 50mm

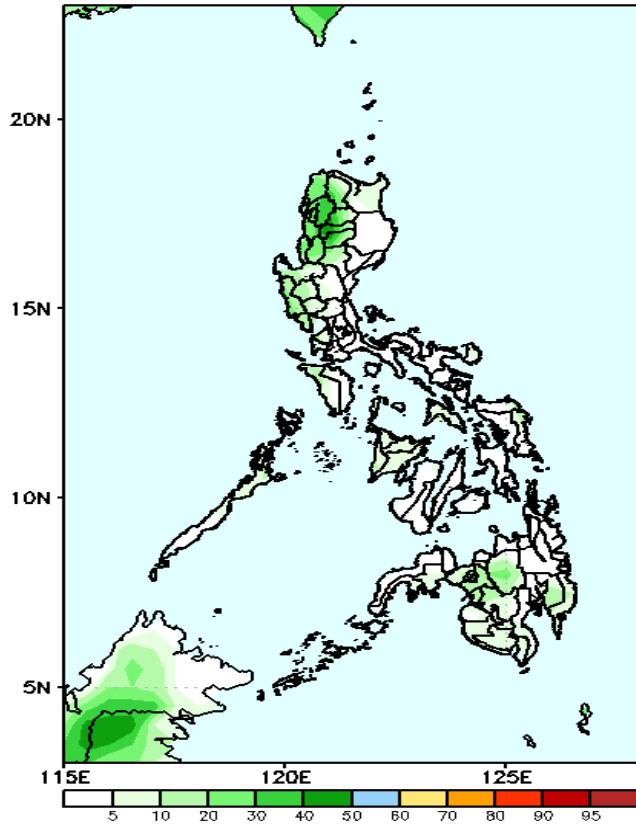
- Moderate to high over most of northern Luzon, Bukidnon and Lanao provinces;
- Low to moderate over the rest of the country.

Exceedance Probability > 100/150/200 mm



Week 2: May 24-30, 2024

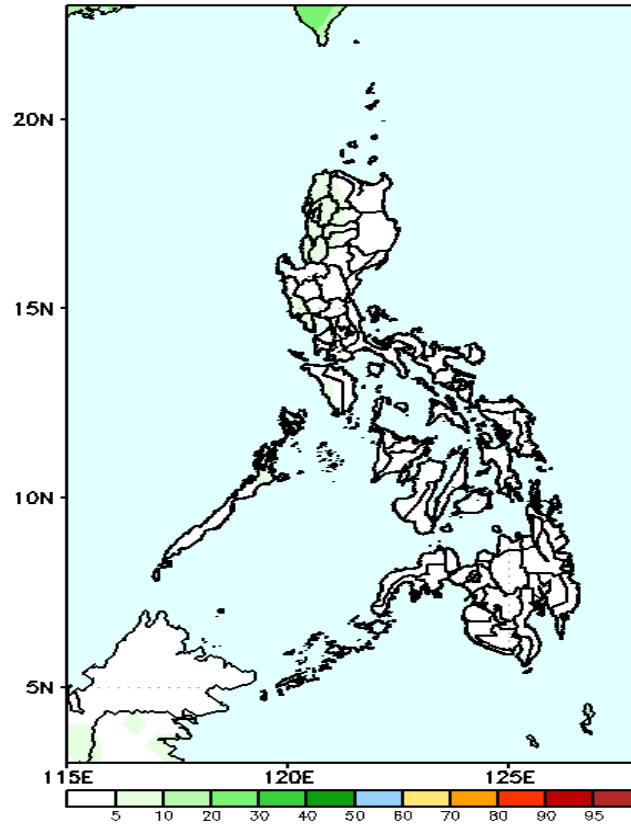
GEFS Week-2 Exceedance Prob. > 100mm
Valid: 20240524 - 20240530



Probability to Exceed 100mm

- Low to moderate over some areas in CAR;
- Low over the rest of the country.

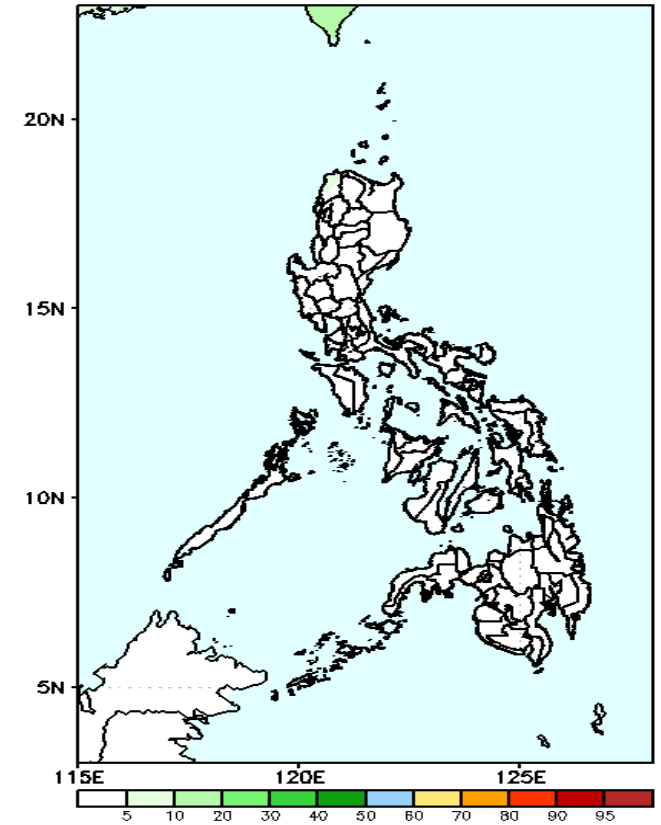
GEFS Week-2 Exceedance Prob. > 150mm
Valid: 20240524 - 20240530



Probability to Exceed 150mm

- Low across the country.

GEFS Week-2 Exceedance Prob. > 200mm
Valid: 20240524 - 20240530

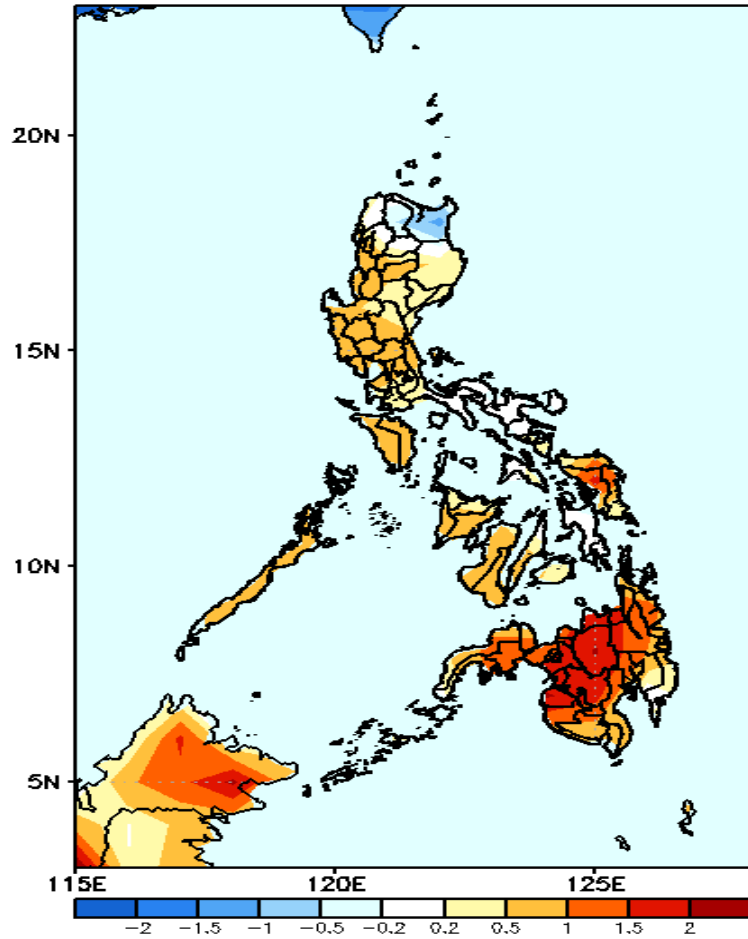


Probability to Exceed 200mm

- Low across the country.

GEFS Week-1 & 2 Forecasts: T2m Anomaly

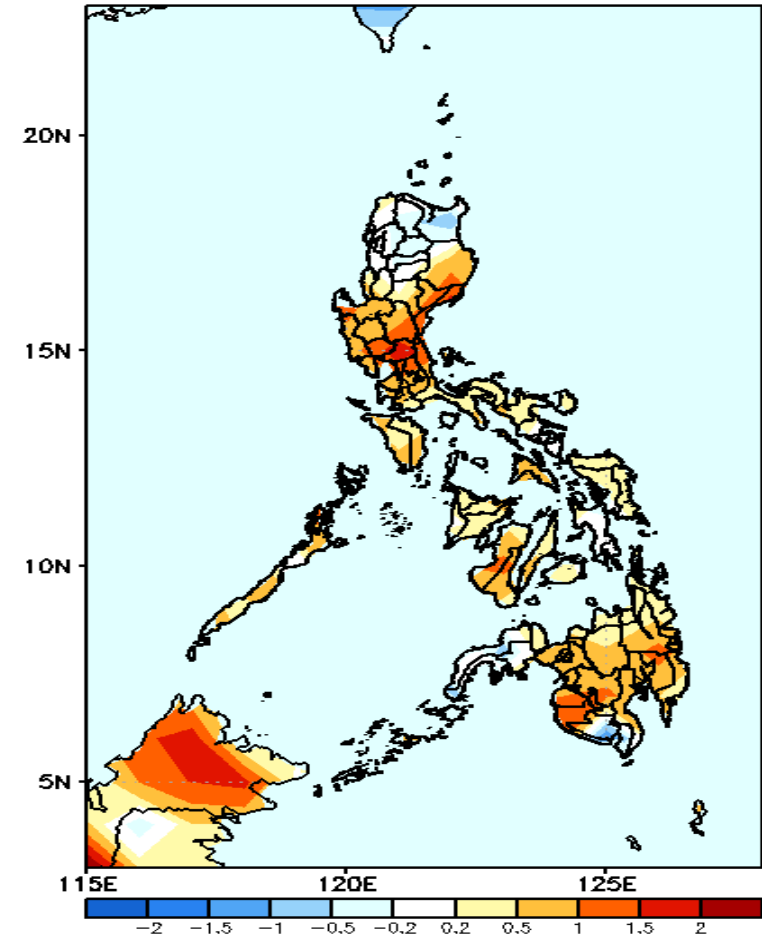
GEFS Week-1 T2m Anomaly
Valid: 20240517 - 20240523



2m Temperature Week 1: May 17-23, 2024

Near to slightly warmer than average surface air temperature will likely be experienced in most parts of Luzon and Visayas except in Cagayan- slightly cooler while most parts of Mindanao will like have warmer than average surface temperature.

GEFS Week-2 T2m Anomaly
Valid: 20240524 - 20240530



2m Temperature Week 2: May 24-30, 2024

Near to warmer than average surface air temperature will likely be experienced in most parts of the country.